

## \$499,900 - 1 Lawrence Crescent, St. Albert

MLS® #E4445321

**\$499,900**

5 Bedroom, 2.00 Bathroom, 1,233 sqft

Single Family on 0.00 Acres

Lacombe Park, St. Albert, AB

Modern, clean and crisp! This 5 bedroom bungalow is updated and move in ready! Nestled on a quiet crescent close to schools, parks & walking trails. Maple hardwood floors extend throughout the main floor. The updated kitchen features white cabinetry, backsplash, concrete countertops, island, modern floating shelves & stainless steel appliances. The living room is spacious and features a cozy wood-burning fireplace and is open to the large dining space. There are three bedrooms on the main floor with a stunning 5pce updated bathroom featuring double sinks, concrete counters and tub surround. The spacious primary bedroom includes custom closet built-ins. The fully finished basement offers 2 additional bedrooms with newer legal egress windows, a 4-piece bath with Greek soaker tub, large rec room with painted concrete floors, and 2 newer hot water tanks. Enjoy the landscaped backyard and 22x24 heated garage. A perfect family home in a highly desirable neighbourhood!

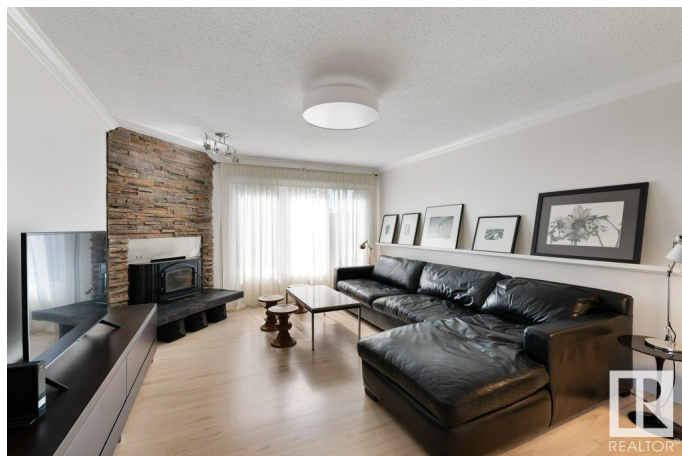
Built in 1972

### Essential Information

MLS® # E4445321

Price \$499,900

Bedrooms 5



Bathrooms	2.00
Full Baths	2
Square Footage	1,233
Acres	0.00
Year Built	1972
Type	Single Family
Sub-Type	Detached Single Family
Style	Bungalow
Status	Active

### Community Information

Address	1 Lawrence Crescent
Area	St. Albert
Subdivision	Lacombe Park
City	St. Albert
County	ALBERTA
Province	AB
Postal Code	T8N 1S9

### Amenities

Amenities	Patio, Vinyl Windows
Parking	Double Garage Detached

### Interior

Appliances	Dishwasher-Built-In, Dryer, Garage Control, Garage Opener, Microwave Hood Fan, Refrigerator, Stove-Electric, Washer, Window Coverings
Heating	Forced Air-1, Natural Gas
Stories	2
Has Basement	Yes
Basement	Full, Finished

### Exterior

Exterior	Wood, Metal, Stucco
Exterior Features	Fenced, Flat Site, Landscaped, Public Transportation, Schools, Shopping Nearby
Roof	Asphalt Shingles
Construction	Wood, Metal, Stucco
Foundation	Concrete Perimeter

### Additional Information

Date Listed July 2nd, 2025

Days on Market 2

Zoning Zone 24

DATA IS DEEMED RELIABLE BUT IS NOT GUARANTEED ACCURATE BY THE REALTORS® ASSOCIATION OF EDMONTON. COPYRIGHT 2025 BY THE REALTORS® ASSOCIATION OF EDMONTON. ALL RIGHTS RESERVED. Trademarks are owned or controlled by the Canadian Real Estate Association (CREA) and identify real estate professionals who are members of CREA (REALTOR®, REALTORS®) and/or the quality of services they provide (MLS®, Multiple Listing Service®)

Listing information last updated on July 4th, 2025 at 3:33pm MDT