

\$342,500 - 73 2051 Towne Centre Boulevard, Edmonton

MLS® #E4443236

\$342,500

2 Bedroom, 2.50 Bathroom, 1,116 sqft

Condo / Townhouse on 0.00 Acres

Terwillegar Towne, Edmonton, AB

Prime Location & Maintenance-Free Living!
Live just steps from the Terwillegar Rec Centre in this stylish townhouse in sought-after Mosaic Ridge! This well-kept home features two spacious primary bedrooms, each with a walk-in closet and private ensuite, perfect for roommates, guests, or a home office setup. The bright, open-concept main floor is ideal for entertaining, with rich hardwood flooring, a large south-facing balcony for sunny BBQs, and a chef-inspired kitchen complete with a raised breakfast bar, quality stainless steel appliances, tile backsplash, and ample cabinetry. Enjoy a fenced front yard, double attached garage, and a convenient flex area upstairs—great for a home office or study nook. Recent updates include BRAND NEW carpet with good-quality underlay for added comfort. Unbeatable location with quick access to the Rec Centre, Leger Transit Centre, shopping, schools, and major routes including the Henday and Whitemud. Move-in ready and a fantastic opportunity—this one won't last!

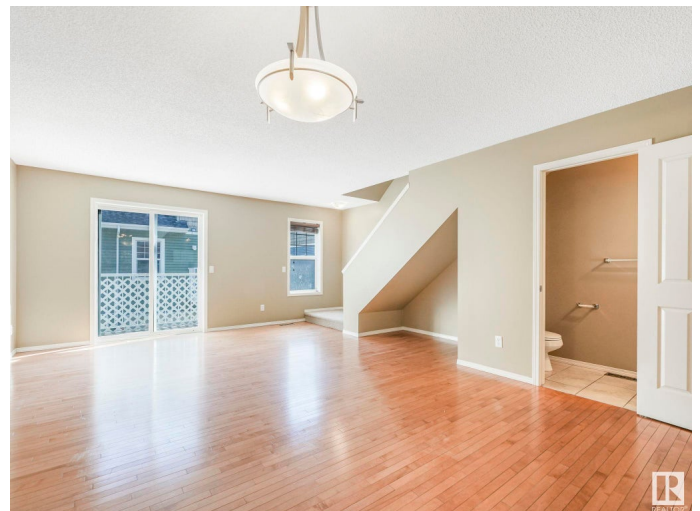
Built in 2007

Essential Information

MLS® # E4443236

Price \$342,500

Bedrooms 2



Bathrooms	2.50
Full Baths	2
Half Baths	1
Square Footage	1,116
Acres	0.00
Year Built	2007
Type	Condo / Townhouse
Sub-Type	Townhouse
Style	2 Storey
Status	Active

Community Information

Address	73 2051 Towne Centre Boulevard
Area	Edmonton
Subdivision	Terwillegar Towne
City	Edmonton
County	ALBERTA
Province	AB
Postal Code	T6R 0G8

Amenities

Amenities	No Smoking Home, Parking-Visitor
Parking Spaces	2
Parking	Double Garage Attached

Interior

Interior Features	ensuite bathroom
Appliances	Dishwasher-Built-In, Dryer, Garage Control, Microwave Hood Fan, Refrigerator, Stove-Electric, Washer, Window Coverings
Heating	Forced Air-1, Natural Gas
Stories	2
Has Basement	Yes
Basement	Full, Unfinished

Exterior

Exterior	Wood, Vinyl
Exterior Features	Fenced, Golf Nearby, Playground Nearby, Public Swimming Pool, Public Transportation, Schools, Ski Hill Nearby
Roof	Asphalt Shingles

Construction	Wood, Vinyl
Foundation	Concrete Perimeter

Additional Information

Date Listed	June 19th, 2025
Days on Market	11
Zoning	Zone 14
HOA Fees	138
HOA Fees Freq.	Annually
Condo Fee	\$314

DATA IS DEEMED RELIABLE BUT IS NOT GUARANTEED ACCURATE BY THE REALTORS® ASSOCIATION OF EDMONTON. COPYRIGHT 2025 BY THE REALTORS® ASSOCIATION OF EDMONTON. ALL RIGHTS RESERVED.Trademarks are owned or controlled by the Canadian Real Estate Association (CREA) and identify real estate professionals who are members of CREA (REALTOR®, REALTORS®) and/or the quality of services they provide (MLS®, Multiple Listing Service®)

Listing information last updated on June 30th, 2025 at 6:17pm MDT