

## \$179,500 - 1508 Jubilee Drive, Sherwood Park

MLS® #E4434985

### \$179,500

3 Bedroom, 2.00 Bathroom, 1,207 sqft  
Land Lease Community on 0.00 Acres

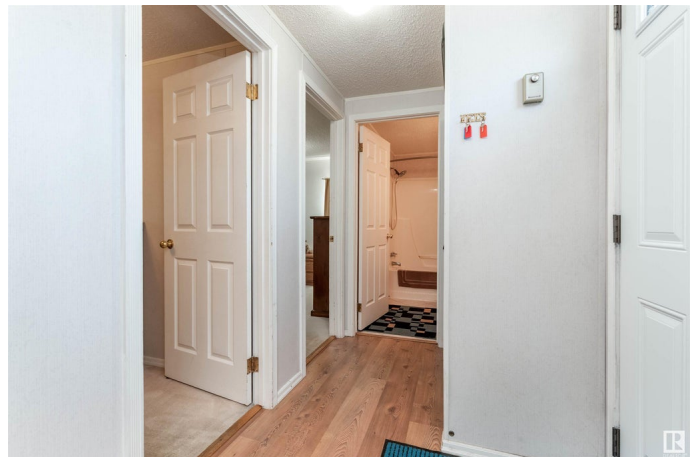
Jubilee Landing, Sherwood Park, AB

**LOVELY 3 BEDROOM MOBILE HOME!** This super affordable home offers 1206 square feet with laminate flooring, a spacious living room with vaulted ceilings and gas fireplace. Bright & cheery eat-in kitchen with skylight and open dining space plus all appliances are included. Laundry area is tucked away in the back. The Primary Bedroom features a beautiful 4 piece ensuite with soaker jacuzzi tub and a walk-in closet. The other 2 bedrooms are at the opposite end with a 4 piece bathroom. Lovely backyard with shed and a nice gazebo too! 2 vehicles can park on the driveway. Great location close to wonderful amenities, public transit and more! Visit REALTOR® website for more information.

Built in 1994

### Essential Information

MLS® #	E4434985
Price	\$179,500
Bedrooms	3
Bathrooms	2.00
Full Baths	2
Square Footage	1,207
Acres	0.00
Year Built	1994
Type	Land Lease Community



Sub-Type	Detached Single Family
Style	Bungalow
Status	Active

### Community Information

Address	1508 Jubilee Drive
Area	Sherwood Park
Subdivision	Jubilee Landing
City	Sherwood Park
County	ALBERTA
Province	AB
Postal Code	T8H 1M1

### Amenities

Parking	Front Drive Access, See Remarks
---------	---------------------------------

### Interior

Interior Features	ensuite bathroom
Appliances	Dishwasher-Built-In, Dryer, Hood Fan, Refrigerator, Storage Shed, Stove-Electric, Washer, Window Coverings
Heating	Forced Air-1, Natural Gas
Fireplace	Yes

### Exterior

Foundation	See Remarks, Wood
------------	-------------------

### Additional Information

Date Listed	May 7th, 2025
Days on Market	40
Zoning	Zone 25

DATA IS DEEMED RELIABLE BUT IS NOT GUARANTEED ACCURATE BY THE REALTORS® ASSOCIATION OF EDMONTON. COPYRIGHT 2025 BY THE REALTORS® ASSOCIATION OF EDMONTON. ALL RIGHTS RESERVED. Trademarks are owned or controlled by the Canadian Real Estate Association (CREA) and identify real estate professionals who are members of CREA (REALTOR®, REALTORS®) and/or the quality of services they provide (MLS®, Multiple Listing Service®)

Listing information last updated on June 16th, 2025 at 7:32pm MDT