

# \$399,800 - 8519 81 Avenue, Edmonton

MLS® #E4431031

**\$399,800**

0 Bedroom, 0.00 Bathroom,  
Single Family on 0.00 Acres

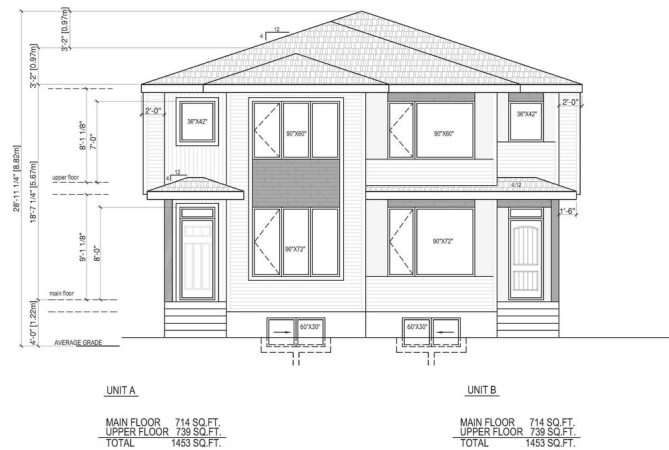
King Edward Park, Edmonton, AB

Investor and Builder Alert! GEM in King  
Edward Park! 42' x 130' Lot. Could be qualified  
for CMHC program.



## Essential Information

MLS® #	E4431031
Price	\$399,800
Bathrooms	0.00
Acres	0.00
Type	Single Family
Sub-Type	Vacant Lot/Land
Status	Active



## Community Information

Address	8519 81 Avenue
Area	Edmonton
Subdivision	King Edward Park
City	Edmonton
County	ALBERTA
Province	AB
Postal Code	T6C 0W3

## Exterior

Exterior Features    Playground Nearby, Public Transportation, Schools, Shopping Nearby

## Additional Information

Date Listed            April 15th, 2025

Days on Market 22

Zoning Zone 17

DATA IS DEEMED RELIABLE BUT IS NOT GUARANTEED ACCURATE BY THE REALTORS® ASSOCIATION OF EDMONTON. COPYRIGHT 2025 BY THE REALTORS® ASSOCIATION OF EDMONTON. ALL RIGHTS RESERVED. Trademarks are owned or controlled by the Canadian Real Estate Association (CREA) and identify real estate professionals who are members of CREA (REALTOR®, REALTORS®) and/or the quality of services they provide (MLS®, Multiple Listing Service®)

Listing information last updated on May 6th, 2025 at 10:47pm MDT